

# TOP DEALS

Valid 01/02/2017 - 30/04/2017

## TWIN PACK COMBI AND IMPACT DRIVER 3 X 3.0AH BATTERIES

### STORM FORCE® 10.8V CORDLESS HAMMER DRILL WITH TWO LI-ION BATTERIES

Storm Force cordless hammer drill fitted with a powerful 25Nm variable speed motor with 21 torque control positions and three functions; drill, hammer drill and screwdriver. Fitted with a sturdy 10mm keyless chuck, super bright LED worklight, metal belt clip and a battery level indicator. Supplied with an impressive 10.8V 1.5Ah lithium powered battery, one-hour quick charger and a heavy duty carry case.

### STORM FORCE® 10.8V CORDLESS IMPACT DRIVER - BARE

Storm Force cordless impact driver. Achieves a powerful 80Nm of torque capable of delivering an impact rate of 3500 per minute. Fitted with a 1/4" quick release collet, forward reverse facility, super bright LED worklight and a battery level indicator.

### 10.8V LI-ION BATTERY FOR POWER INTERCHANGE RANGE

ALSO COMES WITH TOOL BAG 30237



CODE: 52046

£104<sup>95</sup>

DRAPER Tools

## GWS 750

115mm Angle Grinder  
750w Motor  
Re-start protection  
Slim grip handle  
Dust-protected air inlet and cotton thread head  
Compact gear housing that features a flat gear head allows the user convenience even in tight spaces

Code	Voltage
0601394260	110v
0601394070	240v

 **BOSCH**  
Invented for life



£39.99

## GSB 1080-2-LI

10.8v Cordless Combi, c/w 2 x 1.5Ah, AL1110, Carry Case

Bosch Electronic Cell Protection (ECP) protects the battery against overload, overheating and deep discharge  
2 Speed gearbox to allow drilling in various materials  
Max drilling diameter in wood: 19mm  
Max screw diameter: 7mm  
10mm Keyless Chuck



CODE: 06019F3070

£70.95

 **BOSCH**  
Invented for life

## TWIN PACK COMBI AND IMPACT DRIVER 3 X 3.0AH BATTERIES

1 x DHP482 COMBI DRILL  
1 X DTD152 IMPACT DRIVER  
3 X 3.0AH LI-ION BATTERIES  
1 X DC18RC CHARGER  
1 X MAKPAC TYPE 3 CASE  
Combi Drill 18v 3 x 3.0 ah batteries





CODE: DLX2131JX1

£249.00

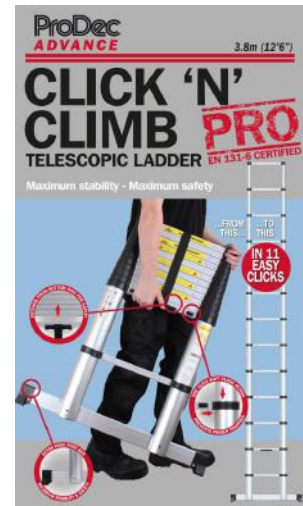
MEMBER OVERPRINT AREA

## CLICK 'N' CLIMB TELESCOPIC LADDER 3.8M

Click 'n' Climb is a 12 rung ladder that extends from 2'6" to 12'6" (3.8m) in just 11 clicks, all in a matter of seconds. Plus it can be extended to any intermediate height that the job demands, making it the ultimate versatile ladder for the tradesman. Once the job's been finished, each step collapses smoothly to return the ladder to a handy back-of-the-van size.

CODE: CCTL38B

£119.00



## WATERSAFE ATLANTIC - PACK OF 10

Double Coated Latex - Fully Coated Smooth Latex Under Layer with a Palm Coated Sandy Latex Top Layer  
15g Polyester Liner - Waterproof to the wrist  
Excellent Dexterity and Grip  
EN388 - 3131  
Available in Size 8-10  
Pack of 10



CODE: WS1

£19.50

## KWIK TAK

Premium Quality Adhesive, highly versatile, heavy duty contact adhesive.  
500ml



Qty	Price
Singles	£2.15 each
Box (12 units per box)	£1.95 each

CODE: 0600

FROM  
£1.95

## HARD HAT HIGH PERFORMANCE TOPCOAT

Wide range of colours available - 500ml Aerosols  
Sold in packs of 6  
More paint in the can, resulting in a higher coverage: 3-4m<sup>2</sup>.  
One hard hat aerosol equals up to 2-3 standard aerosols  
A higher film build without drips or runs, in one go.  
Twice the opacity of cheaper paint sprays (saving a cross layer).  
Normal coverage in one pass.  
Quicker drying: 10-15 minutes!  
Higher quality pigments for a longer gloss and colour retention.

### Colour choices:

White Aluminium (Ral 9006)  
Light Blue (Ral 5012)  
Signal Blue (Ral 5005)  
National Blue  
Gentian Blue (Ral 5010)  
Ultramarine Blue (Ral 5002)  
Sapphire Blue (Ral 5003)  
Yellow Green (Ral 6018)  
Signal Green (Ral 6032)  
Reseda Green (Ral 6011)  
Emerald Green (Ral 6001)  
Moss Green (Ral 6005)  
Grass Green (Ral 6010)  
Oyster White (Ral 1013)  
Clear Ivory (Ral 1015)  
Light Yellow (Ral 1018)  
Traffic Yellow (Ral 1023)  
Melon Yellow (Ral 1028)  
Coleseed Yellow (Ral 1021)  
Signal Yellow (Ral 1003)  
Safety Yellow (Ral 1007)  
Golden Yellow (Ral 1004)  
Pastel Orange (Ral 2003)  
International Orange (Ral 2002)  
Yellow Orange (Ral 2000)  
Red Lilac (Ral 4001)  
Bright Red (Ral 3000)  
Traffic Red (Ral 3020)  
Ochre Brown (Ral 8001)



£53.94 PER PACK OF 6

## AFSC18QSL MACHINE ONLY

AFSC18QSL + 3 x 5.0ah batteries

Same performance as the mains-powered tool, with outstanding work progress for professional use in a large number of tasks/sectors. Powerful 18 V Li-ion batteries with charge control display. State-of-the-art Li-ion technology with individual cell monitoring. StarlockMax tool mounting with outstanding torque transfer, suitable for all Starlock, StarlockPlus and StarlockMax accessories. Rapid charger for continuous working without interruption. All FEIN SuperCut accessories can be used. Convenient QuickIN quick clamping system. Outstanding FEIN quality and stability. Designed for continuous use and high loads. Electronic speed control.



CODE: 7 129 27 70 24 0

£389.95

## AFSC18QSL CARPENTRY SET

AFSC18QSL + 3 x 5.0ah batteries and carpentry accessory set. High-performance battery-powered SuperCut developed specially for use in interiors and woodworking. Complete set in high-quality tool case with the key accessories for the most common applications in this area. Can also be used as a fully-functional delta sander for accurate grinding in corners and edges without kickback. StarlockMax tool mounting with outstanding torque transfer, suitable for all Starlock, StarlockPlus and StarlockMax accessories. Same performance as the mains-powered tool. State-of-the-art Li-ion technology with individual cell monitoring. Powerful 18 V Li-ion batteries with charge control display. Rapid charger for continuous working without interruption. Convenient QuickIN quick clamping system. Outstanding FEIN quality and stability. Designed for continuous use and high loads.



CODE: 7 129 27 71 24 0

£469.95



## KHE 2660 QUICK 240V: 850 W, 3.0J, 3 FUNCTION SDS+ HAMMER, QUICK CHANGE 3 JAW CHUCK, CARRY CASE

+ 5 piece bit & chisel set  
 "Max. single blow energy (EPTA): 3J  
 Maximum impact rate: 4300/min  
 Rated input power: 850W  
 Drill-Ø concrete with hammer drills: 26mm  
 Bit retainer: SDS-Plus"



**metabo**  
 PROFESSIONAL POWER TOOL SOLUTIONS

CODE: UK600663590

£139.95

## COMBOSET 2.6.1: BS 18 DRILL/ DRIVER + MT 18 LTX MULTI TOOL 2 X 18V 2.0AH, SC 60 PLUS, CARRY CASE

BS 18 Cordless:  
 Battery pack voltage: 18V  
 Maximum torque - soft: 24Nm  
 Maximum torque, hard: 48Nm  
 Drill Ø steel: 10mm  
 Drill-Ø soft wood: 20mm  
 MT 18 LTX  
 Battery pack voltage: 18V  
 Capacity of battery pack: 2Ah  
 Orbital frequency with no load: 7000-18000/min  
 Oscillation angle left/right: 1.6 °



CODE: 685081000

**metabo**  
 PROFESSIONAL POWER TOOL SOLUTIONS

£249.00

## KHA 18 LTX LIHD SET, 3 X 18V LIHD 3.1AH, ASC30-36V, METALOC

Battery pack voltage: 18V  
 Max. single blow energy (EPTA): 2.2J  
 Maximum impact rate: 4000/min  
 Drill-Ø concrete with hammer drills: 24mm  
 Bit retainer: SDS-plus



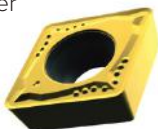
**metabo**  
 PROFESSIONAL POWER TOOL SOLUTIONS

CODE: 600210770

£299.95

## TURNING INSERTS

060204E Turning Insert (Positive) FM Chipbreaker  
Sold in packs of 10



CODE: CCMT 060204E-FM:T9325

£3.49



## ZIPP AIR ENGRAVER ZP209

Lightweight, small diameter & metal body  
1.2mm stroke length  
34,000 Blow Per Minute

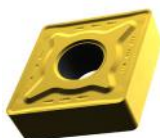


CODE: 01043244

£69.95

## TURNING INSERTS

Sold in packs of 10



Code	Description
CNMG 120408E-FM:T8330	120408E Turning Insert (Negative) FM Chipbreaker
CNMG 120408E-M:T8330	120408E Turning Insert (Negative) M Chipbreaker
CNMG 120408E-SM:T8330	120408E Turning Insert (Negative) SM Chipbreaker

£4.99



## BORING KIT

8-12MM (A08H-SCLCR 06 (x1),  
A10H-SCLCR 06 (x1),  
A12K-SCLCR 06 (x1)  
CCMT 060204E-FM T9325 (x10)



CODE: KITSCLCR-CC-064-T9325

£99.99

## XLFCFN PARTING KITS

Code	Description
KITXLFCFN-26-3-T8330	XLFCFN 2602 J 3.00 (x1) LFMX 3.1-.20TNF2 T8330 (x10)
KITXLFCFN-26-4-T8330	XLFCFN 2603 J 4.00 (x1) LFMX 4.1-.20SNF2:T8330 (x10)
KITXLFCFN-32-3-T8330	XLFCFN 3202 M 3.00 (x1) LFMX 3.1-.20TNF2 T8330 (x10)
KITXLFCFN-32-4-T8330	XLFCFN 3203 M 4.00 (x1) LFMX 4.1-.20SNF2:T8330 (x10)



£59.99

## DCLNR TURNING KITS

Code	Description
KITDCLNR-20-128-FM-T8330	DCLNR 2020 K 12 (x1) CNMG 120408E-FM:T8330 (x10)
KITDCLNR-25-128-FM-T8330	DCLNR 2525 M 12 (x1) CNMG 120408E-FM:T8330 (x10)
KITDCLNR-20-128-M-T8330	DCLNR 2020 K 12 (x1) CNMG 120408E-M:T8330 (x10)
KITDCLNR-25-128-M-T8330	DCLNR 2525 M 12 (x1) CNMG 120408E-M:T8330 (x10)
KITDCLNR-20-128-SM-T8330	DCLNR 2020 K 12 (x1) CNMG 120408E-SM:T8330 (x10)
KITDCLNR-25-128-SM-T8330	DCLNR 2525 M 12 (x1) CNMG 120408E-SM:T8330 (x10)



£59.99

## XTS 142 MMA INVERTER MACHINE PACKAGE MACHINE COMPLETE WITH XR935H HELMET AND PANTHER GAUNTLETS

140A MMA Inverter  
Suitable for Maintenance Repair, Agricultural and DIY and Training  
230V 1P Input  
Duty Cycle 140A @ 20%

CODE: XTS142CO

£149.00

parweld



## LARGE VIEW LIGHT REACTIVE WELDING AND GRINDING HELMET

Available in Silver, Red (XR936H/R) or Blue (XR936H/B)  
Automatic Light Adjustment from Light to Dark in 1/30,000 Second  
Shade Control from DIN 5 - 13  
Variable Sensitivity, Variable Delay  
Suitable for TIG Welding

parweld



CODE: XR936H

£49.95

## XTS 162 MMA INVERTER MACHINE PACKAGE

Machine complete with XR935H Helmet, WP17V Lift TIG Torch, Panther Gauntlets and 3.2mm E6013 Electrodes x 5kg  
160A MMA Inverter with Lift TIG Function  
Suitable for Light Industrial Manufacturing, Metal Fabrication, Maintenance Repair, Agricultural and DIY and Training  
230V 1P Input  
Maximum Electrode Size 3.2mm  
Duty Cycle 160A @ 20%

parweld



CODE: XTS162CO

£199.00

## XTM 182I MIG INVERTER MACHINE PACKAGE

Machine complete with XR935H Helmet, ECO150A MIG Torch, Panther Gauntlets, Argon Regulator and Spool 0.8mm Steel MIG Wire x 5kg  
180A Compact Synergic MIG Inverter with Built in Trolley  
Suitable for Light Industrial Manufacturing, Maintenance Repair, Training, Sheet Metal Work and Automotive  
230V 1P Input  
Duty Cycle 180A @ 20%  
Wire Size 0.6mm - 1.0mm

parweld



CODE: XTM182ICO

£579.00

## XTT 202P AC/DC PULSED TIG INVERTER MACHINE PACKAGE

Machine complete with XR936H Helmet, PRO26 Remote Control TIG Torch, Panther TIG Gloves and Argon Regulator  
200A AC/DC TIG Inverter  
Suitable for Light Industrial Manufacturing, Training, Sheet Metal Work and Aluminium and Stainless Steel Fabrication  
230V 1P Input  
Duty Cycle 200A @ 30%  
Variable Pulse Frequency

parweld



CODE: XTT202PCO

£799.95

## COBIT BIT AND NUT SETTER SET - 24 PIECE

Colour coded bits for easy size identification  
 Contents includes:  
 1 of each size 1/4" Hex shank bit x25mm long  
 Pozidriv - PZ1, PZ2 (2 pieces)  
 Phillips - PH1, PH2 (2 pieces)  
 Torx - TX10, TX15, TX20, TX25, TX30, TX40  
 Hex - 4mm, 5mm, 6mm  
 1 Nut Setter for each size 6mm, 7mm, 8mm, 10mm, 11mm & 13mm  
 1 Magnetic Bit Holder  
 1 Hand ratchet for bits and nut setters  
 1 Adaptor - 1/4" Hex to 1/4" Square



CODE: C02082

£18.95

## MAX LEVERAGE DIAGONAL CUTTING PLIER + LANYARD

Capacity: 3mm Hard Wire.  
 Constructed of high-quality steel and rust-resistant  
 Fitted with industry-leading, three-zone comfort grips  
 PowerSlot Technology, providing 2X more power and half the cutting effort  
 Made in Germany and backed by IRWIN's Lifetime Guarantee

Code	Size	Price
VIS1950503	175mm (7")	£22.95
VIS1950504	200mm (8")	£26.95



FROM  
£22.95

## HSS JOBBER DRILL SET - BRIGHT FINISH

DIN 338 Specification  
 Split Point  
 Bright Finish

Code	Size	Price
LDS/001B	1-10mm x 0.5mm	£19.95
LDS/002B	1-13mm x 0.5mm	£29.95



FROM  
£19.95

## POWERBLADE TAPE WITH FREE PENCILS

Dura NY nylon coated steel dual printed blade  
 Vertical blade markings on the reverse. Patented hi-vis blade printing  
 Magnetic end hook and deburred blade edges  
 Accuracy: EC Class II.  
 Blade Width: 27mm.

Code	Size	Price
KOMMPT516SP	5M/16"	£9.95
KOMMPT826SP	8M/26"	£10.95



FROM  
£9.95

## 1/4" DRIVE SOCKET SET - 33 PIECES

Contents:  
 Sockets hex 4 4.5 5 5.5 6 7  
 8 9 10 11 12 13 mm  
 in-hex 3 4 5 6  
 slotted 4 5.5 6.5  
 PH 12  
 PZ 12  
 TORX® T15 T20 T25 T30  
 Extension 50 100 mm  
 Universal joint  
 Driving handle 150 mm  
 Adaptor 1/4" sq. dr. - 1/4" hex dr.  
 Lever change ratchet, fine-toothed, 72 teeth  
 Dimensions: L 300 x W 180 x D 52 mm



CODE: 4400.2033

£29.95

carolus  
by GEDORE

## CLICKTRONIC 200 1/2" DR.

Unique on a torque wrench, the TimeStrip® gives a visual indication that the wrench is due for re-calibration.  
 OLED digital display provides a clear and easy to read display that help to significantly reduce setting errors.  
 Multiple torque units allows for most countries preferred torque units to easily be accessed.  
 Factory calibrated to +/-3% and our tried and tested mechanism ensures that accuracy is retained for longer.  
 Secure push/pull lock adjustment knob is quick and intuitive to use and prevents accidental adjustment.  
 Every wrench comes supplied with a calibration certificate  
 Supplied with a built in rechargeable lithium battery and charging lead.  
 0.2 N.m scale increments between 40 - 54 N.m, 0.5 N.m scale increments between 54 - 136 N.m and 1 N.m scale increments between 136 - 200 N.m  
 Made to order, 7 day lead time

CODE: 15156

£129.95



## LARGE TOOLBAG OFFER

Toolbag contains:

DT4064 - BGL TOOLBAG 410X240X270MM  
 DV8431 - KUXP010-N LOCK FOLDING KNIFE  
 BS535 - 140G HACKSAW FRAME  
 DV8229 - KLIX24-N I-BEAM LEVEL  
 DV8042 - KTXP106-8M-N POCKET TAPE  
 AV8315 - KBS1224-10 UNIQUE HACKSAW VIS

**Starrett**



£52.50

## SMALL TOOLBAG OFFER

Toolbag contains:

DT4060 - BGS TOOLBAG 300X170X220MM  
 DV8431 - KUXP010-N LOCK FOLDING KNIFE  
 DV8232 - KLTX95-N TORPEDO LEVEL  
 DV8022 - KTX1-5M-N POCKET TAPE

**Starrett**



£23.95

## MEDIUM TOOLBAG OFFER

Toolbag contains:

DT4062 - BGM TOOLBAG 300X170X220MM  
 DA63545 - SO11 HIDDEN EDGE KNIFE  
 SA395 - BU4 JIGSAW ASSORTED WALLET  
 DV8042 - KTXP106-8M-N POCKET TAPE

**Starrett**



£37.50

## 1 FOR 6 SCREWDRIVER 100MM - PZ 1-2-3 PH 1-2-3

New 1 for 6 screwdriver is a unique, patented product that allows this one screwdriver to fit 6 sizes of cross-tip screws of Phillips (PH1, PH2, PH3) and Pozi (PZ1, PZ2 and PZ3).

High quality blade made from special steel and hardened to provide optimum performance.

Blade is matt chrome plated with black tip.

Handle is anatomically designed to provide optimum pressure with minimal user fatigue, its shape ensures excellent power transmission.

Special designs accommodate maximum areas of tip contact, thus reducing the risk of 'slip out' and potential damage.

CODE: 14610

£6.95



## 1 FOR 6 SCREWDRIVER - INSULATED - PZ 1-2-3 PH 1-2-3

New 1 for 6 screwdriver is a unique, patented product that allows this one screwdriver to fit 6 sizes of cross-tip screws of Phillips (PH1, PH2, PH3) and Pozi (PZ1, PZ2 and PZ3).

High quality blade made from special steel and hardened to provide optimum performance.

Blade is matt chrome plated with black tip.

Handle is anatomically designed to provide optimum pressure with minimal user fatigue, its shape ensures excellent power transmission.

Special designs accommodate maximum areas of tip contact, thus reducing the risk of 'slip out' and potential damage.

CODE: INS14610

£7.95



## 1 FOR 6 SCREWDRIVER 25MM - PZ 1-2-3 PH 1-2-3

New 1 for 6 screwdriver is a unique, patented product that allows this one screwdriver to fit 6 sizes of cross-tip screws of Phillips (PH1, PH2, PH3) and Pozi (PZ1, PZ2 and PZ3).

High quality blade made from special steel and hardened to provide optimum performance.

Blade is matt chrome plated with black tip.

Handle is anatomically designed to provide optimum pressure with minimal user fatigue, its shape ensures excellent power transmission.

Special designs accommodate maximum areas of tip contact, thus reducing the risk of 'slip out' and potential damage.

CODE: 146025

£5.95



## 1 FOR 6 SCREWDRIVER 200MM - PZ 1-2-3 PH 1-2-3

New 1 for 6 screwdriver is a unique, patented product that allows this one screwdriver to fit 6 sizes of cross-tip screws of Phillips (PH1, PH2, PH3) and Pozi (PZ1, PZ2 and PZ3).

High quality blade made from special steel and hardened to provide optimum performance.

Blade is matt chrome plated with black tip.

Handle is anatomically designed to provide optimum pressure with minimal user fatigue, its shape ensures excellent power transmission.

Special designs accommodate maximum areas of tip contact, thus reducing the risk of 'slip out' and potential damage.

CODE: 14620

£9.95



## 10 PERSON FIRST AID KIT

Kit contains:

- 1 x Guidance note
- 4 x Non-woven triangular bandages
- 2 x Large sterile dressing (180 x 180mm)
- 6 x Medium sterile dressing (120 x 120mm)
- 2 x Sterile eye pad dressing
- 20 x Assorted sterile waterproof plasters
- 6 x alcohol free cleansing wipes
- 1 x pair of disposable vinyl gloves
- 6 x Safety pins



CODE: CFA10

£9.75

**CLICK**  
FIRST AID

## PSV FIRST AID KIT

Kit contains:

- 1 x Guidance note
- 2 x Conforming bandage (50 x 45mm)
- 1 x Conforming bandage (75 x 45mm)
- 3 x Large sterile dressing (180 x 180mm)
- 2 x Sterile eye pad dressing
- 30 x Assorted sterile waterproof plasters
- 10 x Alcohol free cleansing wipes
- 1 x Pair of disposable vinyl gloves
- 12 x Safety pins
- 1 x Tuffcut scissors



CODE: CFAPSV

£7.95

**CLICK**  
FIRST AID

## 1 PERSON FIRST AID KIT POUCH

Kit contains:

- 1 x Guidance note
- 2 x Non-woven triangular bandages
- 1 x Large sterile dressing (180 x 180mm)
- 6 x Assorted sterile waterproof plasters
- 2 x Alcohol free cleansing wipes
- 1 x Pair of disposable vinyl gloves



CODE: CFA1P

£3.50

**CLICK**  
FIRST AID

## BS8599 SMALL FIRST AID KIT

Kit contains:

- 1 x Guidance note
- 1 x Burn relief dressing (10cm x 10cm)
- 40 x Assorted waterproof plasters
- 2 x Eyepad dressing with sterile bandage
- 1 x Foil blanket
- 1 x Large HSE dressing (18cm x 18cm) sterile and flow-wrapped
- 4 x Medium HSE dressing (12cm x 12cm) sterile and flow-wrapped
- 6 x Nitrile gloves (pair)
- 1 x Mouth-to-mouth resuscitation device with valve
- 2 x Finger dressing with adhesive fixing 3.5cm
- 1 x Conforming bandage 7.5cm x 4m
- 1 x Microporous tape 2.5cm x 5m
- 20 x Sterile cleansing wipes
- 2 x Single use triangular bandage 90cm x 127cm
- 1 x Universal shears small



CODE: CM0100

£17.50

**CLICK**  
FIRST AID

## 20 PERSON FIRST AID KIT

Kit contains:

- 1 x Guidance note
- 6 x Non-woven triangular bandages
- 3 x Large sterile dressing (180 x 180mm)
- 9 x Medium sterile dressing (120 x 120mm)
- 4 x Sterile eye pad dressing
- 40 x Assorted sterile waterproof plasters
- 10 x Alcohol free cleansing wipes
- 2 x Pair of disposable vinyl gloves
- 12 x Safety pins



CODE: CFA20

£13.95

**CLICK**  
FIRST AID

## BS8599 MEDIUM FIRST AID KIT

Kit contains:

- 1 x Guidance note
- 2 x Burn relief dressing (10cm x 10cm)
- 60 x Assorted waterproof plasters
- 3 x Eyepad dressing with sterile bandage
- 2 x Foil blanket
- 2 x Large HSE dressing (18cm x 18cm) sterile and flow-wrapped
- 6 x Medium HSE dressing (12cm x 12cm) sterile and flow-wrapped
- 9 x Nitrile gloves (pair)
- 1 x Mouth-to-mouth resuscitation device with valve
- 3 x Finger dressing with adhesive fixing 3.5cm
- 2 x Conforming bandage 7.5cm x 4m
- 1 x Microporous tape 2.5cm x 5m
- 30 x Sterile cleansing wipes
- 3 x Single use triangular bandage 90cm x 127cm
- 1 x Universal shears small



**CLICK**  
FIRST AID

CODE: CM0110

£24.95

## 50 PERSON FIRST AID KIT

Kit contains:

- 1 x Guidance note
- 8 x Non-woven triangular bandages
- 4 x Large sterile dressing (180 x 180mm)
- 12 x Medium sterile dressing (120 x 120mm)
- 6 x Sterile eye pad dressing
- 60 x Assorted sterile waterproof plasters
- 20 x Alcohol free cleansing wipes
- 3 x Pair of disposable vinyl gloves
- 12 x Safety pins



CODE: CFA50

£19.95

**CLICK**  
FIRST AID

## BS8599 LARGE FIRST AID KIT

Kit contains:

- 1 x Guidance note
- 2 x Burn relief dressing (10cm x 10cm)
- 100 x Assorted waterproof plasters
- 4 x Eyepad dressing with sterile bandage
- 3 x Foil blanket
- 2 x Large HSE dressing (18cm x 18cm) sterile and flow-wrapped
- 8 x Medium HSE dressing (12cm x 12cm) sterile and flow-wrapped
- 12 x Nitrile gloves (pair)
- 2 x Mouth-to-mouth resuscitation device with valve
- 4 x Finger dressing with adhesive fixing 3.5cm
- 2 x Conforming bandage 7.5cm x 4m
- 1 x Microporous tape 2.5cm x 5m
- 40 x Sterile cleansing wipes
- 4 x Single use triangular bandage 90cm x 127cm
- 1 x Universal shears small



**CLICK**  
FIRST AID

CODE: CM0120

£29.95

## FIRST AID BURNS KIT

Kit contains:

- 1 x Sterile burn dressing 5 x 15cm
- 1 x Sterile burn dressing 10 x 10cm
- 1 x Sterile burn dressing 20 x 20cm
- 3 x 3.5gm sachets, pain relieving gel
- 1 x 59ml bottle, pain relieving gel
- 2 x 5cm x 4m conforming bandage
- 6 x safety pins
- 2 x pairs of vinyl gloves



CODE: CM0320

£13.95

**CLICK**  
FIRST AID



## BODY FLUID SPILL KIT (TWO APPLICATIONS)

Supplied in a small carrying case, this kit contains:  
2 x CM0615 Single Application Body Fluid

Spill Kit consisting of:  
1 x CM0620 Clean Up Pack  
1 x 50ml disinfectant spray  
1 x Super absorbent powder sachet (10g)

CODE: CM0605

£11.95



**CLICK**  
FIRST AID

## ASSORTED BLUE PLASTERS 100

Each plaster is individually sealed to keep it sterile  
Box contains 100 plasters  
Ideal for the food industry

CODE: CFABDP100

£2.50



**CLICK**  
FIRST AID

## ASSORTED WATERPROOF PLASTERS 100

Each plaster is individually sealed to keep it sterile  
Box contains 100 plasters  
Ideal for the food industry

CODE: CFAWP100

£1.95



**CLICK**  
FIRST AID

## ASSORTED FABRIC PLASTERS 100

Each plaster is individually sealed to keep it sterile  
Box contains 100 assorted plasters  
60 x 19mm x 40pcs  
76 x 19mm x 10pcs  
38 x 38mm x 10pcs  
76 x 38mm x 5pcs  
Fingertip x 5pcs

CODE: CFAFP100

£2.55



**CLICK**  
FIRST AID

## EYEWASH PODS 20ML

Eyewash pods  
20ml solution  
Sterile Sodium Chloride 0.9% w/v Ph.Eur  
Packed in 25's (25 x 20ml)  
For irrigation only  
Selling unit = 1 pack of 25  
Outer carton quantity 10 packs of 25

CODE: EWS20

£5.00



**CLICK**  
FIRST AID

## SHARPS AND BODY FLUID SPILL KIT

Supplied in a small carrying case, this kit contains:  
1 x CM0615 Single Application Body Fluid Spill Kit  
1 x Sharps handling kit comprising of:  
Sharps disposal container, 0.1 ltr  
Soft vinyl gloves (1 pair)  
Biohazard bag  
Disinfectant wipe  
Sharps handling forceps

**CLICK**  
FIRST AID



CODE: CM0610

£12.95

## NF 1200 IPAD FULLY AUTOMATIC DEFIBRILLATOR

One of the most user-friendly defibrillators on the market  
Metronome function and CPR instructions  
Cannot be incorrectly operated  
Daily self-tests  
Does not require expensive inspection supervision  
Highest IP 54 rating which means that iPad is protected against dust and water  
Also suitable for ships  
CE approved and highest FDA approval  
Stores 1 rescue attempt - 40 min. recording of the entire rescue process as well as ECG data  
Software can be updated  
Can also be used for children up to 25 kg. or below 8 years of age by use special paediatric pads to be purchased separately  
5 years battery life in standby mode battery life of 200 shocks of four hours life  
5 years unit warranty  
5 years battery warranty



CODE: CM0480

**CLICK**  
FIRST AID

£795.00

## EYEWASH FIRST AID KIT

This eyewash kit can be wall mounted or be carried to any incident and has the following contents:  
2 x 500ml sterile eyewash bottles  
8 x 20ml sterile eyewash pods  
2 x boxed eyepad dressings

CODE: CM0721

£14.50

**CLICK**  
FIRST AID



## EYEWASH BOTTLE 500ML

Eyewash Bottle  
Sterile emergency eye wash solution  
500ml bottle  
Sodium chloride BP 0.9%w/v  
For irrigation only

**CLICK**  
FIRST AID

CODE: EWS500

£1.50



## APS-150CV 6" RANDOM ORBITAL PALM SANDER

Low Vibration - one of the lowest available on the market today!  
6" / 150mm Velcro Backing Pad  
5mm Orbit  
Powerful 10,000rpm air motor  
Vacuum Ready



CODE: APS-150CV

£139.00



## SSW-110 PNEUMATIC RECIPROCATING HACKSAW

Special 'double-piston' mechanism for low vibration  
11mm Piston Stroke for improved cutting speed  
Up to 3mm mild steel cutting capacity  
Piped away rear exhaust  
Includes 2 x 32TPI Blades



CODE: SSW-110

£139.00



## BOHRMASTER 2 INCLUDING FREE CUTTER KIT

Combine German engineering and Sheffield quality control with low cost manufacturing and you have a versatile, portable and reliable magdrill at a hugely competitive price point - THE BOHRMASTER. Compact - easily manoeuvrable  
Lightweight - great for site work  
Powerful - drills up to 35mm dia.  
Adjustable reach - for twist drills and deeper holes  
SUPERB VALUE!

Cutter capacity: 12 - 35mm  
Twist drill capacity: 13mm  
Chuck capacity: 1/2"  
No load speed: 450 rpm  
Stroke: 105mm  
Voltage: 110V or 220 - 240V  
Power consumption: 1050w  
Clamping force: 7845N (800kg)  
Length: 270mm  
Height: 330mm  
Width: 10mm (165mm inc. handles)  
Magnet footprint: 160 x 80mm  
Weight: 11.6kg



CODE: BohrMaster 2

£295.00



WORTH  
£180

## JEX-24 PNEUMATIC NEEDLE SCALER

1 BOX OF 3MM X 180MM NEEDLES (100PCS) - FREE OF CHARGE  
Low Vibration  
Pistol Grip  
Ideal for de-scaling and cleaning welds, casatings, paint, stone etc.  
Industrial Duty  
Made in Japan



CODE: JEX-24

£189.00

## 12/24V MAG BASE ROTAT.BEACON

Manufactured to EN65 Standard  
Magnetic rotating beacon fully certified for use on road vehicles.  
Manufactured with a heavy-duty magnetic base for easy fixing to body work, attached to a transparent amber lens and fitted with a bright halogen bulb.  
Supplied with coiled cable and a 12v car adaptor.  
Display packed.

CODE: 63878

£19.95



## EXPERT COMB. LADDER & PLATFORM

Manufactured in accordance with EN131  
Expert Quality, versatile high quality aluminium ladder that can be used in three positions: straight; 'A' frame and work platform with safety barrier.  
Non-slip one-piece plywood platform supplied fits between two ladder sections when in work platform mode.  
Slip-resistant feet on the ladder stabilises position desired whilst working.  
Maximum load EN131: 150kg  
**'A' Frame:**  
Height: 1600mm  
Spread: 1030mm  
**Work Platform:**  
Platform height: 1000mm (max.)  
Overall width: 1580mm  
Extension Ladder:  
Length: 2730mm

CODE: 32845

£138.85



## 12/24V SPIG.FLEX.ROT.BEACON

Manufactured to EN65 Standard  
Flexible spigot base rotating beacon, fully certified for use on road vehicles.  
Manufactured with a heavy-duty base attached to a transparent amber lens and fitted with a bright halogen bulb.  
Supplied with spigot connector for use on 12/24V vehicles fitted with power poles. Display packed.

CODE: 63880

£20.95



## SET OF 6 HSS PARALLEL SHANK BLACKSMITHS DRILLS M14-M24

Fully Ground M2 HSS drills with 1/2" (12.7mm) Shank  
Suitable for all chucks up to 1/2" capacity  
Packed in clearview plastic container for improved visibility  
Drills included, M14, M16, M18, M20, M22, M24

**PRESTO**



CODE: L08610SET1

£30.00

## SET OF 5 HSS 90° STRAIGHT SHANK COUNTERSINKS

HSS M2 Straight Shank Countersinks 6.3mm - 20.5mm  
Packed in clearview plastic container for improved visibility  
Countersinks included 6.3mm, 8.3mm, 10.4mm, 12.4mm, 20.5mm with 3 flutes  
Ideal for deburring and countersinking, used to produce countersinks for screws and chamfer free tapping  
Chatter free working and wasy regrinding at the cutting face

**PRESTO**



CODE: L78010SET1

£30.00

## CONTRACTORS PACK

Complete set of SDS Plus Drills, Masonry Drills, Screwdriver Bits & Plastic Plugs  
Set comprises of 10 each SDS Plus Drills 5.5mm, 6.0mm, 7.0mm x 160mm, 10 ea Masonry Drills 5.5mm, 6mm, 7mm x 100mm, 50 pcs ea S2 Screwdriver Bits PZ2, PH2 a 25mm and 1000 ea Red & Brown Wall Plugs  
Ideal for the contractor or DIY enthusiast  
Packed in card carton with full colour label



CODE: L900006051

£45.00

**PRESTO**

## ULTIMATE PROFESSIONAL WOODSCREWS PLASTIC CASE 1610 SCREWS



CODE: 9ULTIMATECASE1

£39.95

## KITMASTER CASE OF 1700 GENERAL PURPOSE WOODSCREWS



CODE: KMCHIPPY/001

£14.95

## ZIPP AIR SANDER KIT ZP386AK

Rubber grip design for greater comfort  
Built-in regulator adjusts speed to match various applications  
Rear exhaust expels air away from work and reduce noise  
Complete with 3" sanding discs and rubber backing pad  
Discs in 80, 100 & 120 grit (10pcs ea) and Fine, Medium & Coarse (1pcs ec)



CODE: 01042527

£74.95

## ZIPP RUST & PAINT REMOVAL TOOL & CONSUMABLES KIT ZTU-391CK

Central-Vacuum tool kit  
Innovative 180 degree rotational handle for precise leverage and control of tool  
Unique double sided safety guards and integrated dust extraction system for safe and clean operation  
Complete with full range of rust/paint removal accessories



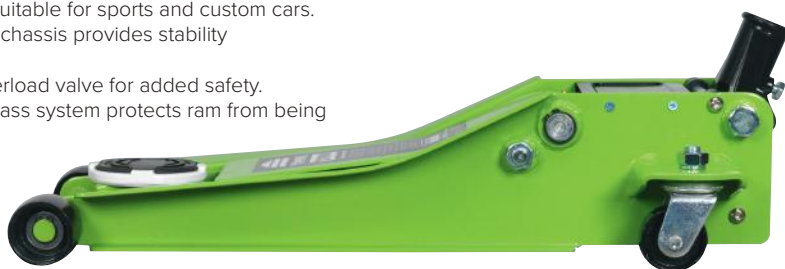
CODE: 01042536

£209.00

## 2TONNE LOW ENTRY TROLLEY JACKS WITH ROCKET LIFT



Min./Max. Saddle Height: 74/514mm.  
 Twin piston Rocket Lift feature brings saddle to maximum height in just 6 strokes.  
 Universal joint release mechanism allows safer, more controlled lowering of jack.  
 Profiled lifting arm gives low clearance height of just 74mm making it suitable for sports and custom cars.  
 Heavy-duty steel chassis provides stability and endurance.  
 Fitted with an overload valve for added safety.  
 Hydraulic oil by-pass system protects ram from being overextended.



**SEALEY**

CODE	COLOUR	PRICE
2001LEBL	Blue	£99.95
2001LEHV	Hi-vis Green	£99.95
2001LEOR	Orange	£99.95
2001LERE	Red	£99.95

## DIRECT DRIVE COMPRESSORS 2HP



Air Displacement: 6.8cfm (193ltr/min).  
 Maximum Free Air Delivery: 4.6cfm (130ltr/min).  
 Maximum Pressure: 116psi (8bar).  
 Aluminium cylinder head with cast iron cylinder gives added resistance to wear.  
 Pump head directly coupled to heavy-duty induction motor for reliable and quiet operation.  
 Precision welded receiver tank manufactured to meet Pressure Vessel Directive.

**SEALEY**

Fitted with fully automatic pressure cut-out switch and twin gauges displaying tank and working pressures.

CODE	CAPACITY	PRICE
NA2420E	24ltr	£94.95
NA5020E	50ltr	£119.95

## 18V 1.5AH LITHIUM-ION CORDLESS RIVETER



18V



Suitable for aluminium, steel, stainless steel and copper rivets.  
 Powered by an 18V 1.5Ah Lithium-ion battery with a pulling force of up to 6000N.  
 Capable of pulling up to 250 rivets on one full charge.  
 Hardened steel jaw assembly.  
 Supplied with four riveting nozzles.  
 Nozzle Sizes: 2.4, 3.2, 4, 4.8mm.  
 Mains Charger: 1hr.

CODE: CP313

**SEALEY**

**£189.95**

## AIR NAIL/STAPLE GUN KIT INCLUDING COMPRESSOR, HOSE & NAILER/STAPLER

The most economical way to purchase an air nail/stapler gun kit.

Comprises SAC0610E Compressor, AH5RX 5mtr Air Hose and SA792 Nail/Staple Gun.

Compact and portable compressor can also be used with any of our air brushes or tyre inflators. Fitted with twin gauges displaying tank and working pressures.

Air Displacement: 4cfm (113ltr/min).

Maximum Free Air Delivery: 2.7cfm (76ltr/min).

CODE: SAC0610EKIT

4 cfm 1hp 6ltr

£149.95



**SEALEY**

## OIL FREE BELT DRIVE COMPRESSORS

1.5HP



5.6 cfm

Oil Free

1.5hp

**SEALEY**



Air Displacement: 5.6cfm (158ltr/min).

Maximum Free Air Delivery: 3.32cfm (94ltr/min).

Maximum Pressure: 116psi (8bar).

Aluminium cylinder with cast iron

lining gives reduced weight and improved resistance to wear.

Oil free, single piston pump is belt driven by a 1.5hp motor and fixed to a vertical type tank, saving space around the workshop.

Precision welded receiver tank manufactured to meet Pressure Vessel Directive.

CODE	CAPACITY	PRICE
SAC03224	24ltr	£149.95
SAC03250	50ltr	£179.95

## 5PC MEASURING TOOL SET



**SEALEY**

Engineering measuring kit including five most commonly used precision measuring/checking devices.

Contents: 150mm Digital Vernier Calliper, 0-25mm Micrometer, Dial Indicator, Bevelled Edge Square, 150mm(6") Stainless Steel Rule.

CODE: AK96SET

£74.95

**HEAVY DUTY**

Auto Cut-Out

230V

**SEALEY**



## AUTOMATIC SUBMERSIBLE WATER PUMPS

Manufactured from heavy-duty corrosion resistant materials with stainless steel motor case and polypropylene base cover.

Minimum Water Depth: 5mm.

Designed for clean water, will accept small particles up to 5mm.

Adjustable automatic low water cut-out.

Suitable for the effective drainage of cellars, sinks, cisterns, baths and the general transfer of water.

CODE	MAX. HEAD	LTR/MIN	MOTOR POWER	PRICE
WPC100P	6mtr	100ltr/min	250W	£54.95
WPC150P	8.5mtr	183ltr/min	550W	£60.95
WPC235P	8.5mtr	217ltr/min	750W	£63.95
WPCD215	8mtr	217ltr/min	750W	£63.95

## 9PC COLOUR CODED LONG BALL-END HEX KEY SET METRIC

Premier

**SEALEY**



Anti-Slip

1.5-10mm

Manufactured from hardened and heat treated Chrome Vanadium steel with a fully polished finish. Keys range in length from 65mm to 175mm and in size from 1.5mm to 10mm. Colour-coded rubber coating for comfort, control and fast identification. Supplied in easy-access case for safe storage and quick key selection.

CODE: AK7190

£9.95



## 9PC COLOUR CODED LONG TRX-STAR\* KEY SET



T10 - T50

Anti-Slip

Manufactured from hardened and heat treated Chrome Vanadium steel with a fully polished finish. Keys range in length from 65mm to 175mm and in size from T10 to T50. Colour-coded rubber coating for comfort, control and fast identification. Supplied in easy-access case for safe storage and quick key selection.

Premier

**SEALEY**

CODE: AK7193

£9.95



## 28PC 1/2"SQ DRIVE WALLDRIVE® SOCKET SET METRIC

Gear2Gear Premier

**SEALEY**



Covers sizes from 8 to 32mm. Contents: 1/2"Sq Drive Sockets; 8 - 32mm, 1/2"Sq Drive Spark Plug Sockets; 16, 21mm, Extension Bars; 75, 125, 250mm, 1/2"Sq Drive 72-Tooth Gear-to-Gear Flip Reverse Ratchet Wrench with Quick Release, Universal Joint, 3/8"Sq Drive 1/2"Sq Drive Male Adaptor.

CODE: AK7953

£49.95



## 32PC 1/4"SQ DRIVE WALLDRIVE® SOCKET SET METRIC

Gear2Gear Premier

**SEALEY**



Covers sizes from 4 to 14mm in both standard and deep. Contents: 1/4"Sq Drive Standard Sockets; 4 - 14mm, 1/4"Sq Drive Deep Sockets; 4 - 14mm, Extension Bars; 75, 150mm, 1/4"Sq Drive 72-Tooth Flip Reverse Ratchet Wrench with Quick Release, Spinner Handle, Universal Joint, 3/8"Sq Drive 1/4"Sq Drive Male Adaptor.

CODE: AK7950

£34.95



## 136PC MECHANIC'S TOOL KIT

Comprehensive range of frequently used hand tools. 1/4" & 1/2"Sq drive 72-Tooth offset comfort grip ratchet wrenches. Includes 1/4", 3/8" and 1/2"Sq drive sockets, hex keys, spanners, screwdrivers, pliers, bits and accessories. Housed in a sturdy carry-case with reinforced corners, aluminium trim and lockable metal catches. Case Size (W x D x H): 465 x 395 x 105mm

1/4", 3/8" & 1/2"Sq. Drive



Premier



**SEALEY**



CODE: AK7980

£149.95

## 190AMP PROFESSIONAL GAS/NO-GAS MIG WELDER WITH EURO TORCH



190Amp Maximum performance. Heavy-duty high output transformer and forced air cooling to maximize duty cycle performance. Supplied with high quality cool running BINZEL® MB15 Euro torch, 2mtr earth cable, 1.4mtr gas hose, twin gauged gas regulator, 1kg spool of 0.6mm wire, 0.6 & 0.8mm contact tips. Set up in the gas welding mode but can also easily be switched to gasless. Can be used with large, industrial CO2 gas bottles.

CODE: MIGHTYMIG190

£379.95

## 12-SPEED BENCH PILLAR DRILL 840MM HT 370W



SEALEY

16mm (5/8") Capacity chuck, MT2. Fitted with no-load voltage switch and locking cover to prevent accidental starting. Height: 840mm. Spindle Centre to Column: 127mm. Motor Power: 220W, Input Power: 370W. Column Diameter: 60mm. Spindle Travel: 60mm. Weight: 37kg.

12 Speed 16mm 370W

CODE: GDM92B

£209.95

## 6 DRAWER TOPCHEST & 5 DRAWER ROLLCAB WITH BALL BEARING RUNNERS - RED/GREY



6 Drawer

5 Drawer

EXCLUSIVE TO THS

American PRO

Six-drawer unit, perfect as an intermediate size locking chest. Drop down carry handles, smooth 25mm ball bearing drawer runners and cylinder lock with locking bars for additional security.

### Topchest

Overall Size (W x D x H): 600 x 260 x 340mm.  
Small Split Drawer (x3): 150 x 220 x 40mm.  
Small Drawer (x2): 510 x 225 x 35mm.  
Medium Drawer (x1): 510 x 225 x 85mm.

Ball Bearing Drawer Slides

### Rollcab

Overall Size (W x D x H): 620 x 330 x 770mm.

SEALEY

CODE: AP22THSST

£149.95

## FIBREGLASS STEP LADDER

Expert Quality, high strength non-conductive frame fibreglass stepladders. Manufactured to EN 131 standards. Lightweight frame fitted with deep ridged aluminium treads for extra grip and non-slip rubber feet give the user added stability.

### 3 STEP:

Maximum load EN131: 150kg  
Height: 1040mm (approx.)  
Spread: 850mm (approx.)  
Weight: 5.8kg

### 5 STEP:

Maximum load EN131: 150kg  
Height: 1600mm (approx.)  
Spread: 1250mm (approx.)  
Weight: 8.15kg

### 7 STEP:

Maximum load EN131: 150kg  
Height: 2160mm (approx.)  
Spread: 1640mm (approx.)  
Weight: 11kg



Code	No of Steps	Price
29937	3 Steps	£49.95
29940	5 Steps	£69.95
29945	7 Steps	£93.95



FROM  
**£49.95**

## PRESSURE WASHER 2200W

Portable pressure washer for domestic use, ensures efficient cleaning of vehicles, caravans, motor vans, driveways, boats etc.

The total stop valve automatically activates and deactivates the high pressure cleaner every time the trigger is operated, which increases the life of the motor and reduces electricity consumption.

Supplied and fitted with 5M of high-pressure hose, gun, lance, pin for cleaning nozzle, patio lance, fixed brush, angle nozzle and turbo nozzle.

Working pump pressure: 110bar (2393psi)

Max. pump pressure: 165bar (1958psi)

Flow rate: 5.5L/min (330L/hour)

Water feed temp: max 40.C

Power cable: 5M

Weight: 10.5kg



CODE: 83414

**£119.95**



## PRESSURE WASHER 1500W

Compact, lightweight and mobile pressure washer for domestic duties. Perfect for cleaning decking, patios, garden furniture, bicycles, cars etc.

Manufactured with an automatic total stop system that activates/deactivates the motor, increasing the motors life and reducing electricity consumption.

Supplied with 3M of hose and gun and adjustable jet nozzle.

Working pump pressure: 70bar (1015psi)

Max. pump pressure: 105bar (1523psi)

Flow rate: 5.0L/min (300L/hour)

Water feed temp: max 40.C

Power cable: 5M

Weight: 6kg



CODE: 83405

**£69.95**

## SET T HAN.TX KEYS-DOUBLE ENDED

Draper TX-STAR® products are compatible with Torx fixing systems. Expert Quality, high leverage key set with Draper TX-STAR® long arms and security Draper TX-STAR® end short arms.

Manufactured from chrome vanadium steel hardened and tempered. Soft grip handles for extra comfort.

Supplied with a wall mountable steel storage rack.

Display carton.

Code	Description	Price
33872	"Draper TX-Star"	£10.99
33873	Ball End Hexagon	£10.99



**£10.99**

## 1/2"DR SOCKET SET 41PCE MM/AF

Contents:

22 Draper Expert HI-TORQ® 12 point sockets size: 8, 9, 10, 11, 12, 13, 14, 15, 16, 17, 18, 19, 20, 21, 22, 24, 25, 26, 27, 28, 30 and 32mm;

10 Draper Expert HI-TORQ® 12 point sockets size: 7/16, 1/2, 9/16, 5/8, 11/16, 3/4, 13/16, 7/8, 15/16 and 1"AF;

3 Draper Expert HI-TORQ® spark plug sockets size: 10, 12 and 14mm; low profile 45 tooth ratchet

3 extension bars size: 75, 125 and 250mm;

Sliding 'T' bar;

Universal joint



CODE: 16836

**£39.95**